



VISIONPRO

The Digital PBX for Small Offices

EXPECT MORE.



Matrix VISIONPRO

The Digital PBX for Small Offices



CLI



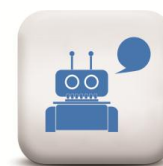
Conference



1-Port PFT



100% Non-blocking



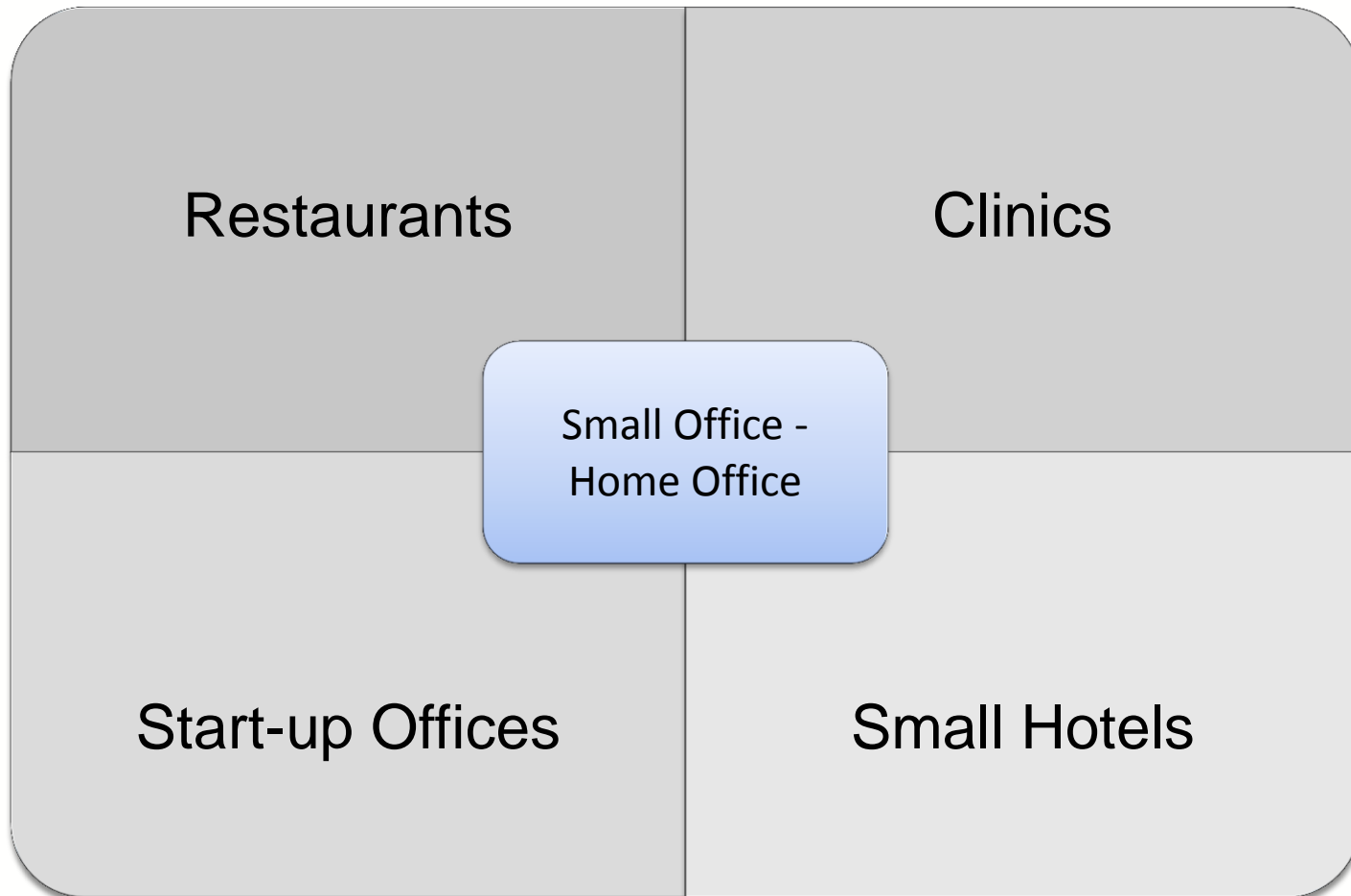
Auto Attendant

Presentation Outlook



- Target Customers
- Key Differentiators
- Product Variants
- Key Features
- Technical Specifications

Target Customers



Key Differentiators

- Built-on DSP based Architecture
- Compact Footprint
- Built-in Auto-Attendant
- Built-in dual 3-Party Conference
- No Speech Path Limitations
- Built-in Power Fail Transfer
- Built-in CLI (both DTMF and FSK)



CLI – DTMF & FSK



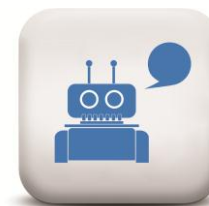
Conference



100% Non-blocking



1-Port PFT



Auto Attendant

Product Variants

VISIONPRO206	Digital PBX with 2 Trunks and 6 Analog Extensions
VISIONPRO308	Digital PBX with 3 Trunks and 8 Analog Extensions
VISIONPRO412	Digital PBX with 4 Trunks and 12 Analog Extensions

Front View



LEDs
For Power and Status

Rear View



12V DC
Power Jack

Earth

CO Ports

SLT Ports

Reset
Button

Key Features

- Allowed and Denied List
- Abbreviated Dialing
- Alternate Number Dialing
- Auto-Attendant
- Auto Callback
- Auto Redial-Multiple Number
- Auto Shut Dynamic Lock
- Caller Line Identification
- External Call Forward
- Conference
- CLI based Routing
- Direct Inward Dialing
- Executive/Secretary
- Remote Programming
- Public Address System
- Flexible numbering
- Voice Messages

Auto-Attendant

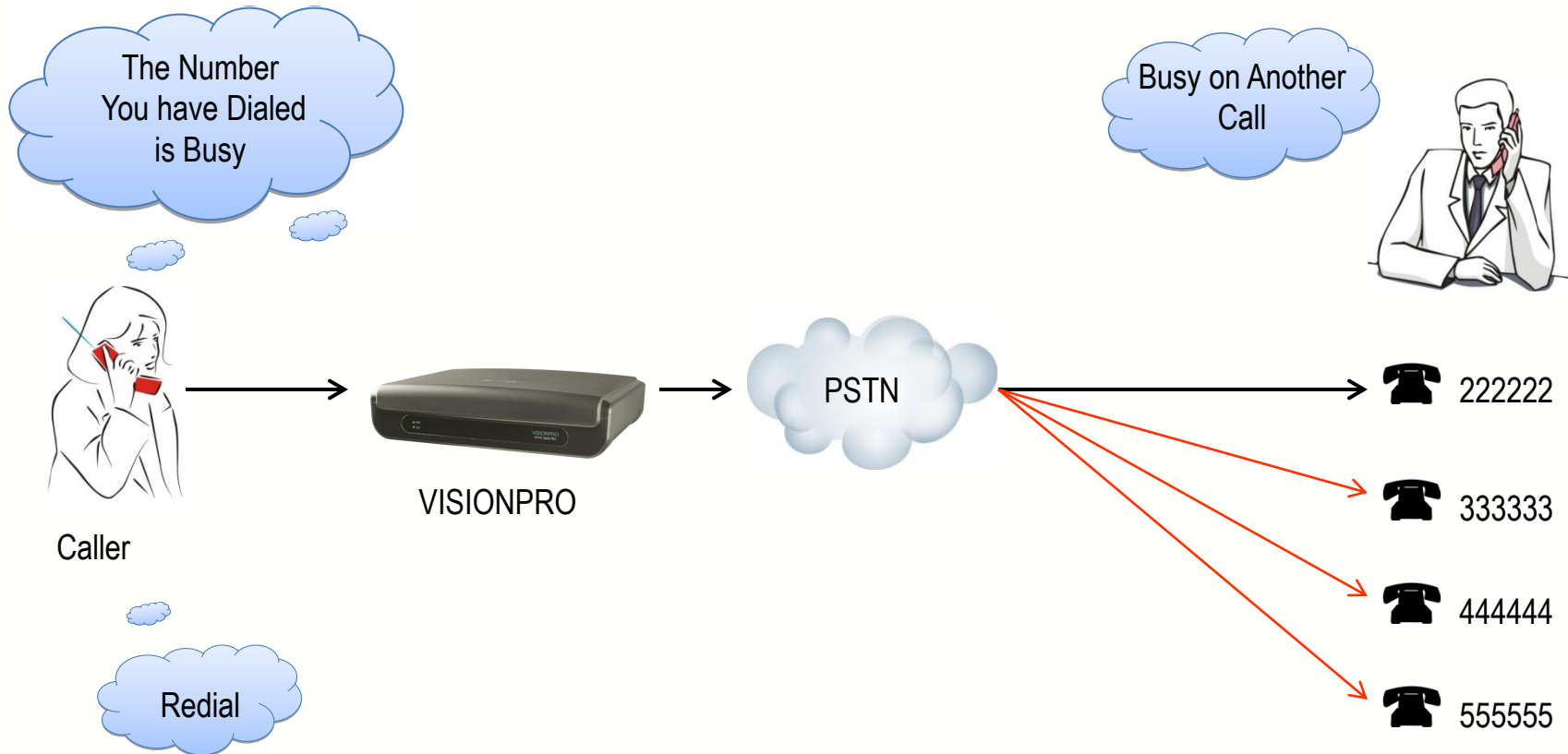
- Built-in Feature
- Supports Dial-by-Name
- Overcome unexpected disasters by re-routing callers
- Eliminate over-staffing and increase productivity

Allowed and Denied List

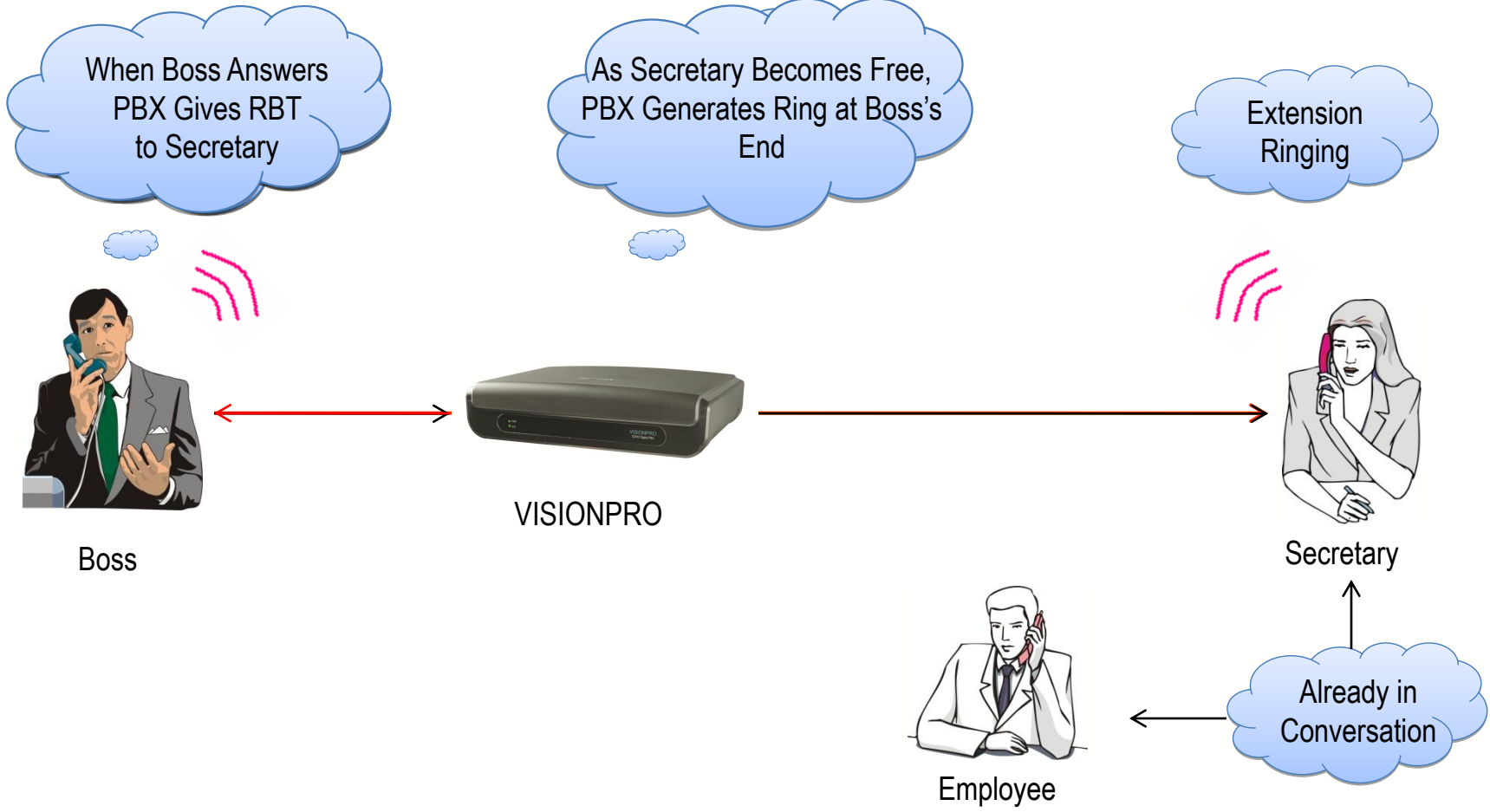
- Allows/Restrict Dialing of Specific Area Codes or Numbers
- Up to 8 Programmable Allowed and Denied List
- Maximum 16 Entries per List and each of 16 Digits Length
- Prevents Misuse of Long Distance/International Dialing Facility
- A Very Useful Cost Control Parameter

Alternate Number Dialing

General Manager



Auto Call Back



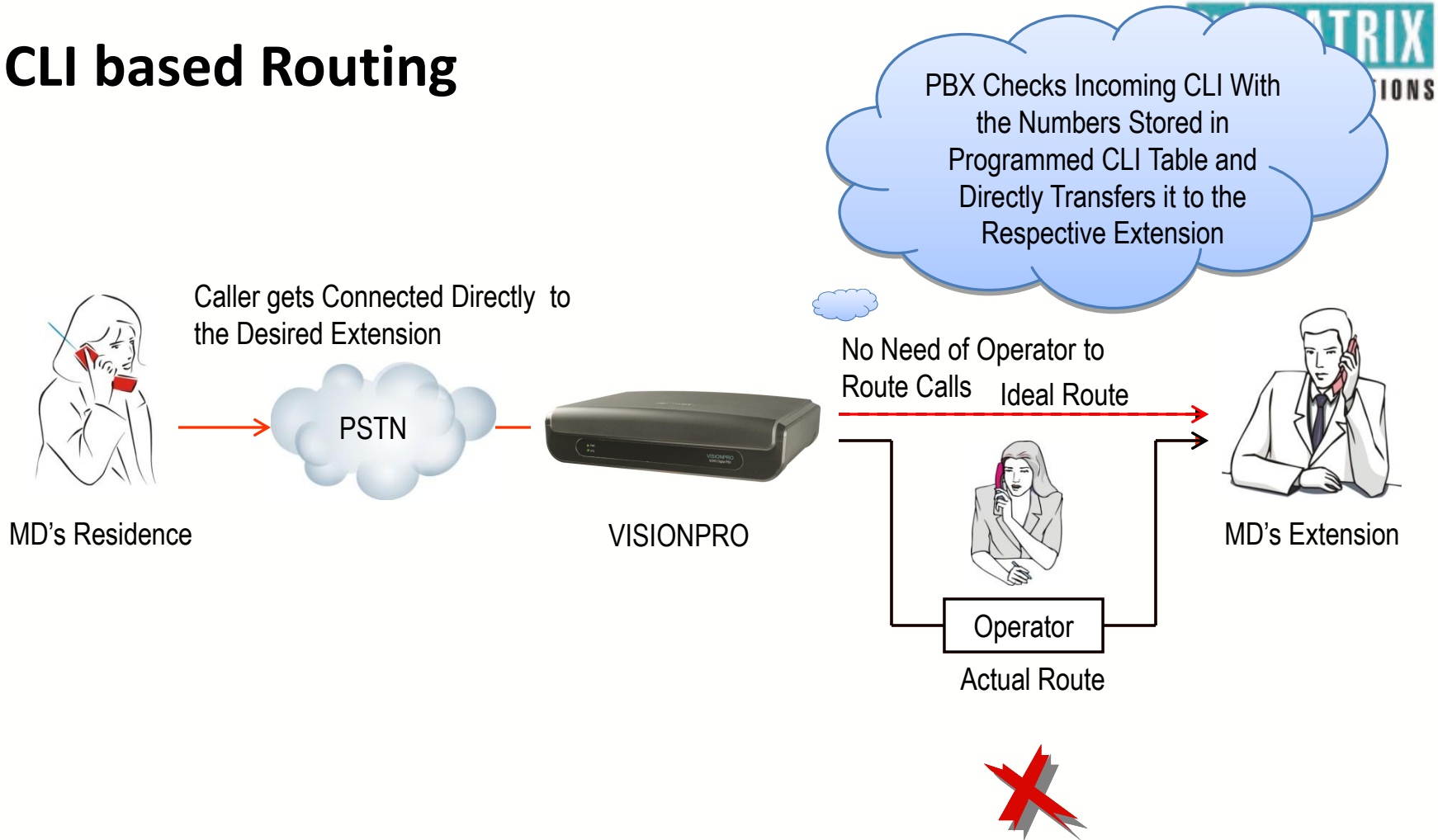
Auto Redial-Multiple Numbers

- No Need to Redial a Busy Extension Repeatedly
 - VISIONPRO Redials a busy number till It gets through and gives you ring when Call gets connected
 - Three Number can be Set for Auto Redial
- ❖ Note: The Auto Redial feature is supported for external numbers only.

Caller Line Identification-DTMF & FSK

- Caller's number is displayed on the CLI display of the Analog Phone
- CLI is Displayed in following Communications
 - ✓ Trunk Calls
 - ✓ Internal Calls
 - ✓ Transferred Calls

CLI based Routing



Scenario 1: Normal Routing

Scenario 2: CLI based Routing

External Call Forwarding



Dial-By-Name

- Enter Desired Person's Name In case Extension Number is not known
- Saves Operator's Time and Effort in transferring a Call

Live Call Supervision

- Get the information of calls Made/Received by an Extension being Supervised on your CLI Telephone
- Information can be Acquired During a Live Call on Need basis
- Very useful features for Organizations where Privacy is Essential



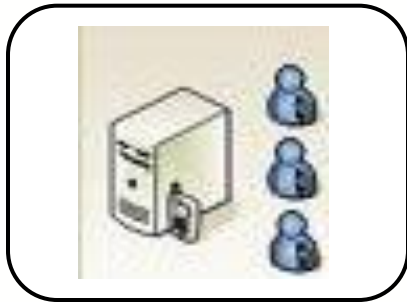
Voice Message Applications

- Guide the Caller in various Call Making Situation Such as:-
- Day/Night Greetings
- Wrong Number Dial/Dial-by-Name
- Initial Guidance
- Busy/Transfer/No Reply
- Store Messages Up to 240 Seconds with 16 Parts of 15 Seconds Each
- Message Can be Recorded from Telephone or Music Source
- One Message is Played at One Time

Voice Message Applications

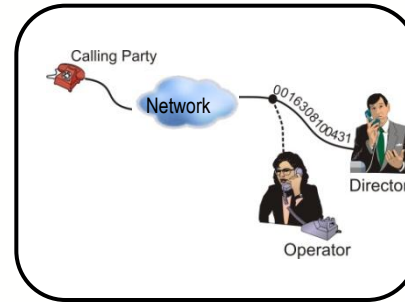
- Voice based Music-on-Hold
- Voice Greeting for Alarms
- Voice Guided help for DID and DOSA
- Voice Message for Auto Redial
- Voice Message for Night Mode
- Voice Message for Emergency

Feature : Benefit



Auto-Attendant

Professional Call Handling



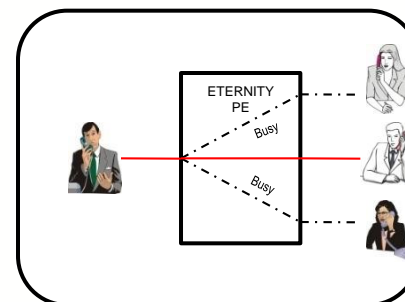
CLI Based Routing

Saves Time and makes Communication easy



Conference

Reduces Cost & Increases Productivity



Alternate Number Dialing

Quick and Easy Dialing to Clients

Technical Specifications



SPECIFICATIONS	VISIONPRO206	VISIONPRO308	VISIONPRO412
Configuration			
Number of Trunks	2	3	4
Number of Extensions	6	8	12
Power Supply			
Input	External Adaptor 12 VDC @ 2A		
Power Consumption (Maximum)	19.2W	19.2W	28.44W
Mechanical			
Dimensions (WxHxD)	15.5 x 22.0 x 4.95cm (6.10"x8.66"x1.95")		
Unit Weight	Max. 0.65kg (1.43lbs)		
Shipping Weight	Max. 1.2kg (2.64lbs) Approx.		
Environment			
Operating Temperature	0 °C to 50 °C (32 °F to 122 °F)		
Operating Humidity	0-95%RH, Non-Condensing		

ORDERING INFORMATION



PRODUCT	DESCRIPTION
VISIONPRO206	Digital PBX with 2 Trunks and 6 Analog Extensions
VISIONPRO308	Digital PBX with 3 Trunks and 8 Analog Extensions
VISIONPRO412	Digital PBX with 4 Trunks and 12 Analog Extensions

We put
more
in the box

so your
business
can think
more
out of
the box.



Thank You.

- Type of Presentation: Product Presentation
- Number of Slides: 23
- Revised on: 9th Dec 2014
- Version-Release Number: V2.R1

For Further Information Please Contact:

Email ID: More@MatrixComSec.com

Visit us at www.MatrixTeleSol.com